

Governance Structure of The Warriner Multi Academy Trust – OCT 2018

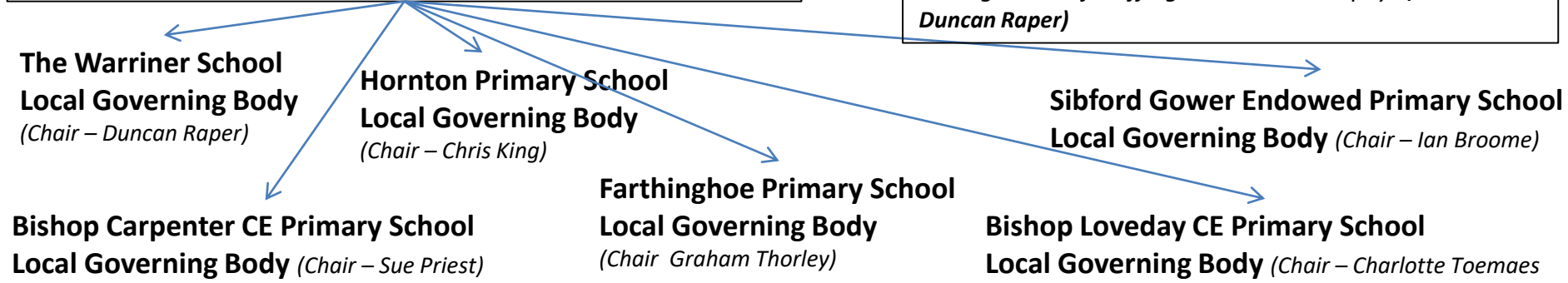
Members; *Appoints the directors and holds them to account.*
ODBE Corporate Member, Mr Duncan Raper, The Rt Rev Colin Fletcher OBE, Mr Peter Norman, Mr Keith Mitchell CBE.



Directors ; *Sets the strategic direction of the WMAT. Accountable to the secretary of state. Represents the interests of all the schools. Delegates some of their responsibilities to director Subcommittee and Local Governing Bodies. Appoints CEO to manage the day to day running of the company in accordance with articles of association.*
Ian Broome, Frances Bartlett, Roger Corke, Brian Heather, Mark Howarth, Annabel Kay (CEO), Jennie Perry, Duncan Raper (Chair of the Directors), Janet Watts, Stephen Wilson.



Local Governing Bodies; *Implements WMAT strategies through the delegated responsibility from the directors. Developing and Monitoring of the School Development Plan. Scrutinising finance and attainment data. Working as a critical friend to the Head Teacher. Monitoring implementation of WMAT policies. Reporting to the Directors.*



WMAT School Improvement Committee; *Implements WMAT strategies through the monitoring and review of attainment and progress data. Develops and implements strategies for shared school improvement. Comprised of the head teachers and directors with school improvement expertise. (Chair – Jennie Perry)*

WMAT Finance Committee; *Monitoring and management of funding and budget. Ensuring all financial decisions are scrutinised and legal responsibilities are met in accordance with The Academies Financial Handbook and other DfE requirements. (Chair – Brian Heather)*

WMAT Central Services Committee; *Monitoring of implementation of WMAT policies and services that can be provided across all of the Academies. (Chair – Mark Howarth)*

WMAT Personnel Committee; *Monitoring and management of staffing structures and pay. (Chair – Duncan Raper)*